

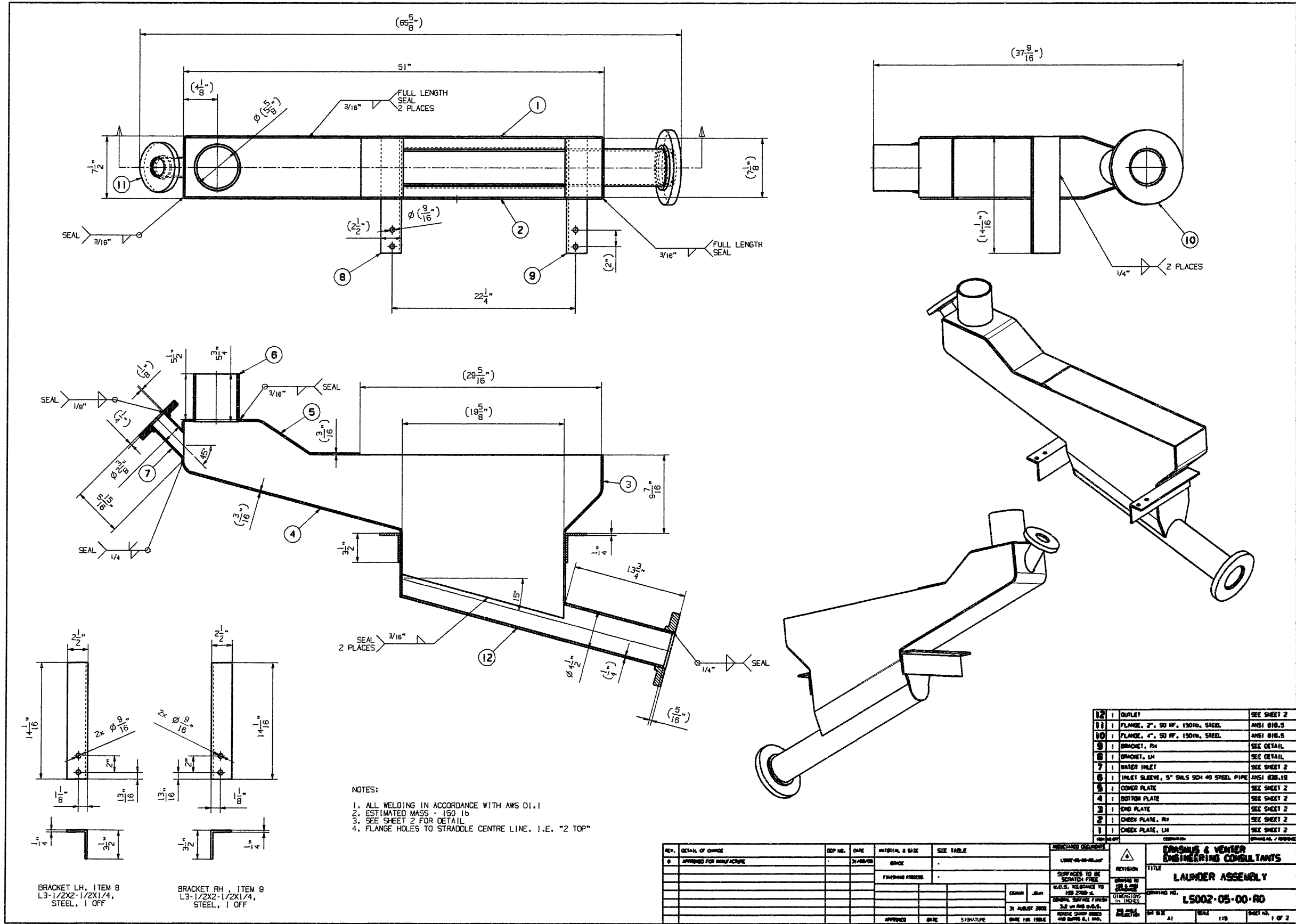
NOTES
 1. MOUNTING AND INTERFACE DETAIL OF ITEMS 8 AND 15 TO BE DETERMINED BY THE MANUFACTURER
 2. ITEMS 12, 13 AND 14 TO BE MOUNTED TO SUIT

20	16	NUT, HEAVY HEX. 3/4" x 10 UN-2A 1-1/2Lg	ASTM A325
19	16	BOLT, HEAVY HEX. 3/4" x 10 UN-2A 1-1/2Lg	ASTM A325
18	16	WASHER, FLAT, HARDENED, 1/2"	
17	32	NUT, HEAVY HEX. 1/2" x 13 UN-2A 1-1/2Lg	ASTM A325
16	32	BOLT, HEAVY HEX. 1/2" x 13 UN-2A 1-1/2Lg	ASTM A325
15	1	GENERATING CYCLOPE FEED PUMP	SPV 304-4
14	1	MCC	MOUNT TO SUIT
13	1	AUTOMATIC CADD	MOUNT TO SUIT
12	1	AUTOMATIC CS250	MOUNT TO SUIT
11	1	GENERATING CYCLOPE	SM2-3123
10	1	SIEVE BED	12x30x9
9	1	CONCENTRATOR	C600
8	1	MILL CYCLOPE FEED PUMP	SPV 304-4
7	1	SHAKING TABLE FEED PUMP	SPV 180-112
6	1	CONCENTRATOR	CS750
5	1	MILL CYCLOPE	01GLD-8218
4	1	VIBRATING SCREEN	306 28-B-5
3	1	PIPPING	L5003-00-00-RD
2	1	SECONDARY SUPPORTING STRUCTURE	L5002-00-00-RD
1	1	PRIMARY SUPPORTING STRUCTURE	L5001-00-00-RD

REV.	DETAIL OF CHANGE	APP. NO.	DATE	DESIGNER & SIZE	SEE TABLE	APPROVED	DATE FOR ISSUE
0	APPROVED FOR MANUFACTURE			SPICE			

DESIGNED BY	DATE	CHKD BY	DATE
DRAWN BY	DATE	APP. BY	DATE

REVISION	TITLE
DATE	PLANT ASSEMBLY
DATE	L5000-00-00-RD
DATE	SCALE
DATE	SHEET NO.



BRACKET LH, ITEM 8
L3-1/2X2-1/2X1/4,
STEEL, 1 OFF

BRACKET RH, ITEM 9
L3-1/2X2-1/2X1/4,
STEEL, 1 OFF

- NOTES:
1. ALL WELDING IN ACCORDANCE WITH AWS D1.1
 2. ESTIMATED MASS - 150 lb
 3. SEE SHEET 2 FOR DETAIL
 4. FLANGE HOLES TO STRADDLE CENTRE LINE. I.E. "2 TOP"

ITEM NO.	DESCRIPTION	QUANTITY	SEE SHEET
12	1 OUTLET		SEE SHEET 2
11	1 FLANGE, 2", 50 WF, 150lb. STEEL		AISI B16.5
10	1 FLANGE, 4", 50 WF, 150lb. STEEL		AISI B16.5
9	1 BRACKET, RH		SEE DETAIL
8	1 BRACKET, LH		SEE DETAIL
7	1 WATER INLET		SEE SHEET 2
6	1 INLET SLEEVE, 5" SMLS SCH 40 STEEL PIPE		AISI B36.10
5	1 COVER PLATE		SEE SHEET 2
4	1 BOTTOM PLATE		SEE SHEET 2
3	1 END PLATE		SEE SHEET 2
2	1 CHECK PLATE, RH		SEE SHEET 2
1	1 CHECK PLATE, LH		SEE SHEET 2

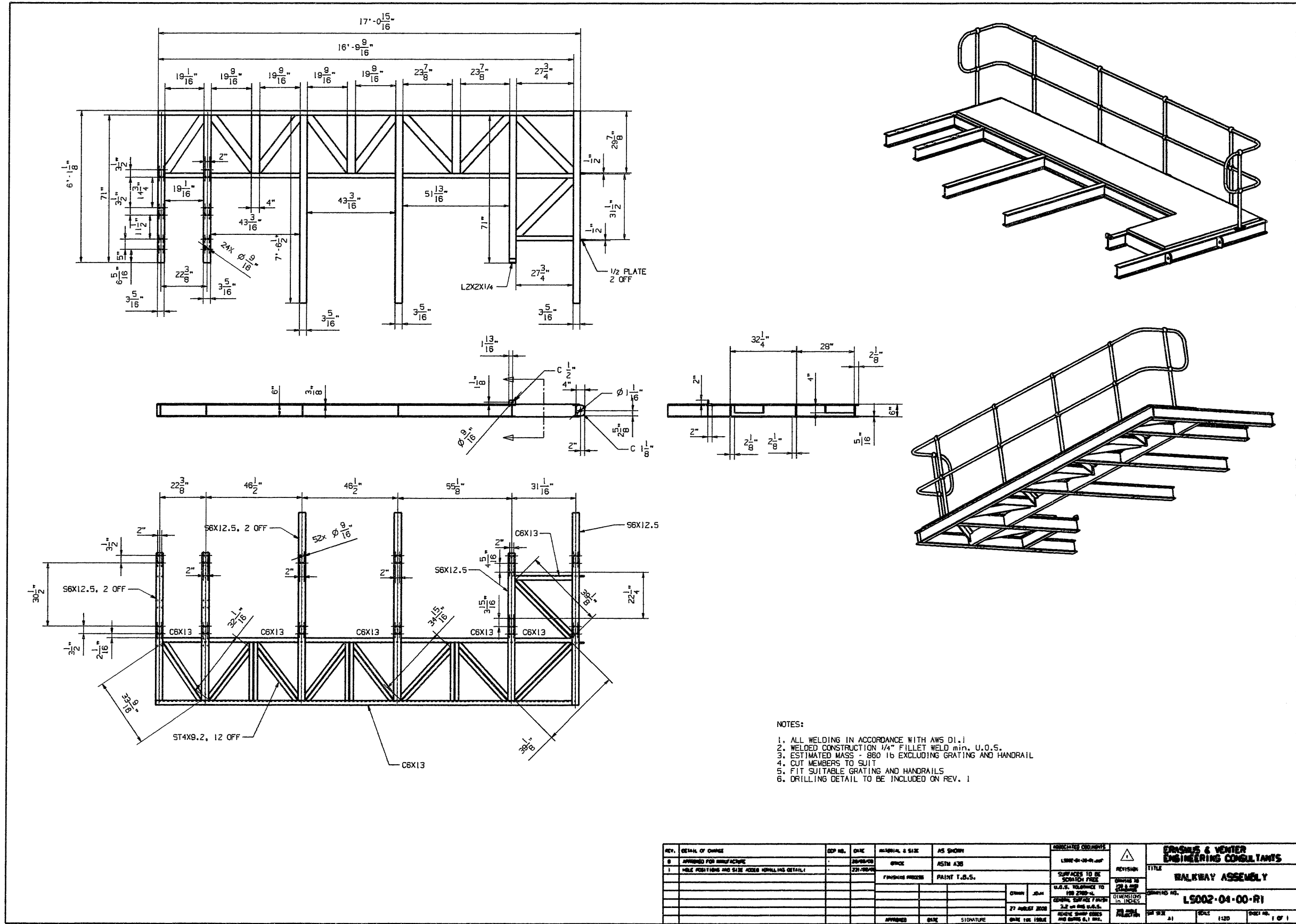
REV.	DETAIL OF CHANGE	REP. NO.	DATE	INITIALS & SIGNATURE	SEE TABLE
0	APPROVED FOR MANUFACTURE		21/08/00		

REV.	DESCRIPTION	DATE
1	ISSUED FOR MANUFACTURE	21/08/00

APPROVED	DATE	SIGNATURE	DATE FOR ISSUE

DESIGNED BY	DATE	SCALE	SHEET NO.
			1 OF 2

ENGINEERING & VEHTER
ENGINEERING CONSULTANTS
LAUNDRY ASSEMBLY
DRAWING NO. L5002-05-00-00
SCALE 1:10



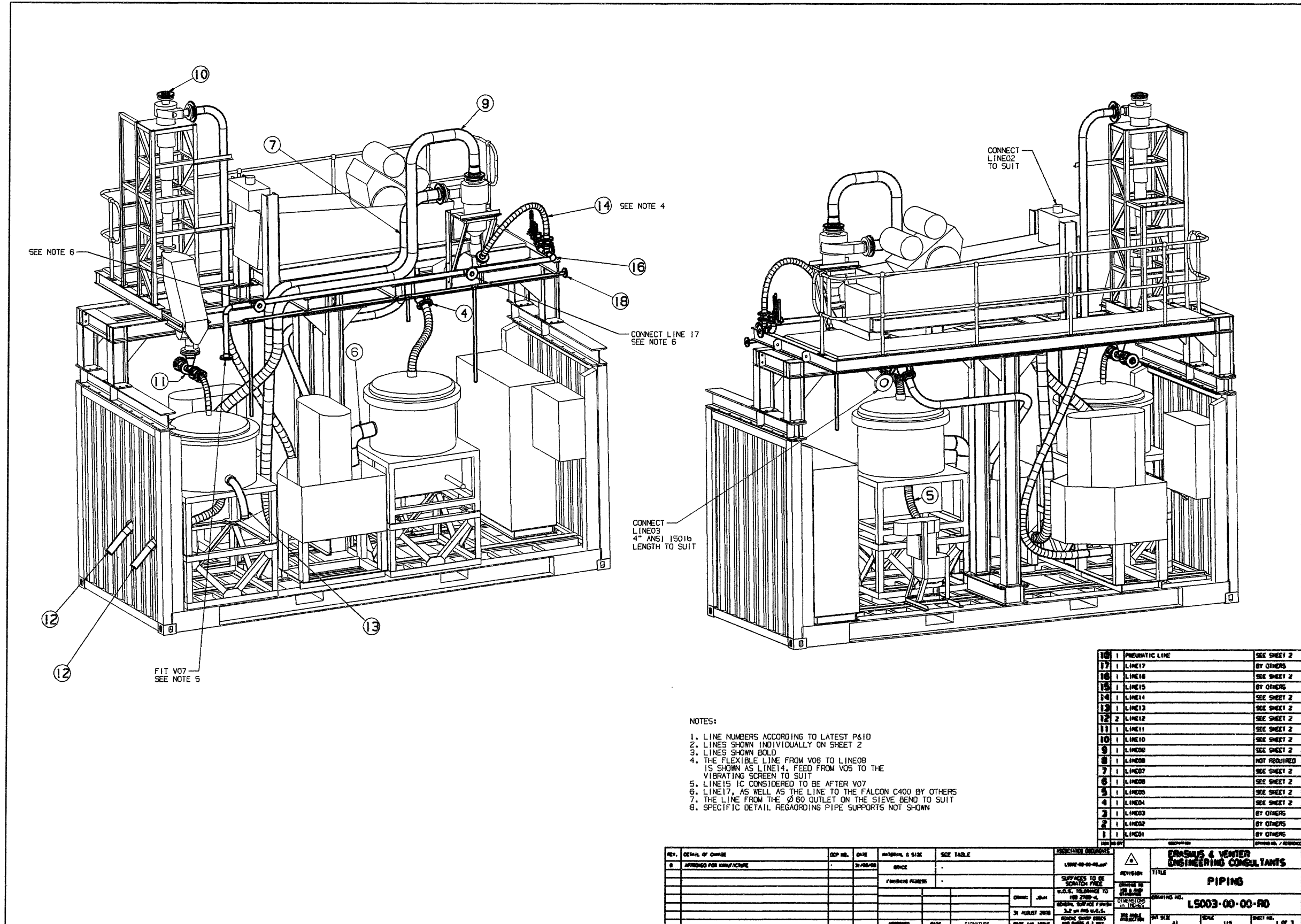
- NOTES:
1. ALL WELDING IN ACCORDANCE WITH AWS D1.1
 2. WELDED CONSTRUCTION $1/4"$ FILLET WELD min. U.O.S.
 3. ESTIMATED MASS - 880 lb EXCLUDING GRATING AND HANDRAIL
 4. CUT MEMBERS TO SUIT
 5. FIT SUITABLE GRATING AND HANDRAILS
 6. DRILLING DETAIL TO BE INCLUDED ON REV. 1

REV.	DETAIL OF CHANGE	REP. NO.	DATE	MATERIAL & SIZE	AS SHOWN	APPROVED	DATE	DESIGNED	DATE	PROJECT NO.	SHEET NO.	TOTAL SHEETS
0	APPROVED FOR MANUFACTURE		20-08-20	SPICE	ASTM A36					L5002-04-00-R1		
1	WELD POSITIONS AND SIZE ACCORDING TO DETAIL 1		22-08-20	FINISHED MEMBER	PAINT T.O.S.							

APPROVED	DATE	SIGNATURE	DATE THE SHEET
			27 AUGUST 2020

DESIGNED	DATE	SIGNATURE	DATE THE SHEET
			27 AUGUST 2020

PROJECT NO.	SHEET NO.	TOTAL SHEETS	SHEET NO.
L5002-04-00-R1	01	1/20	1 OF 1

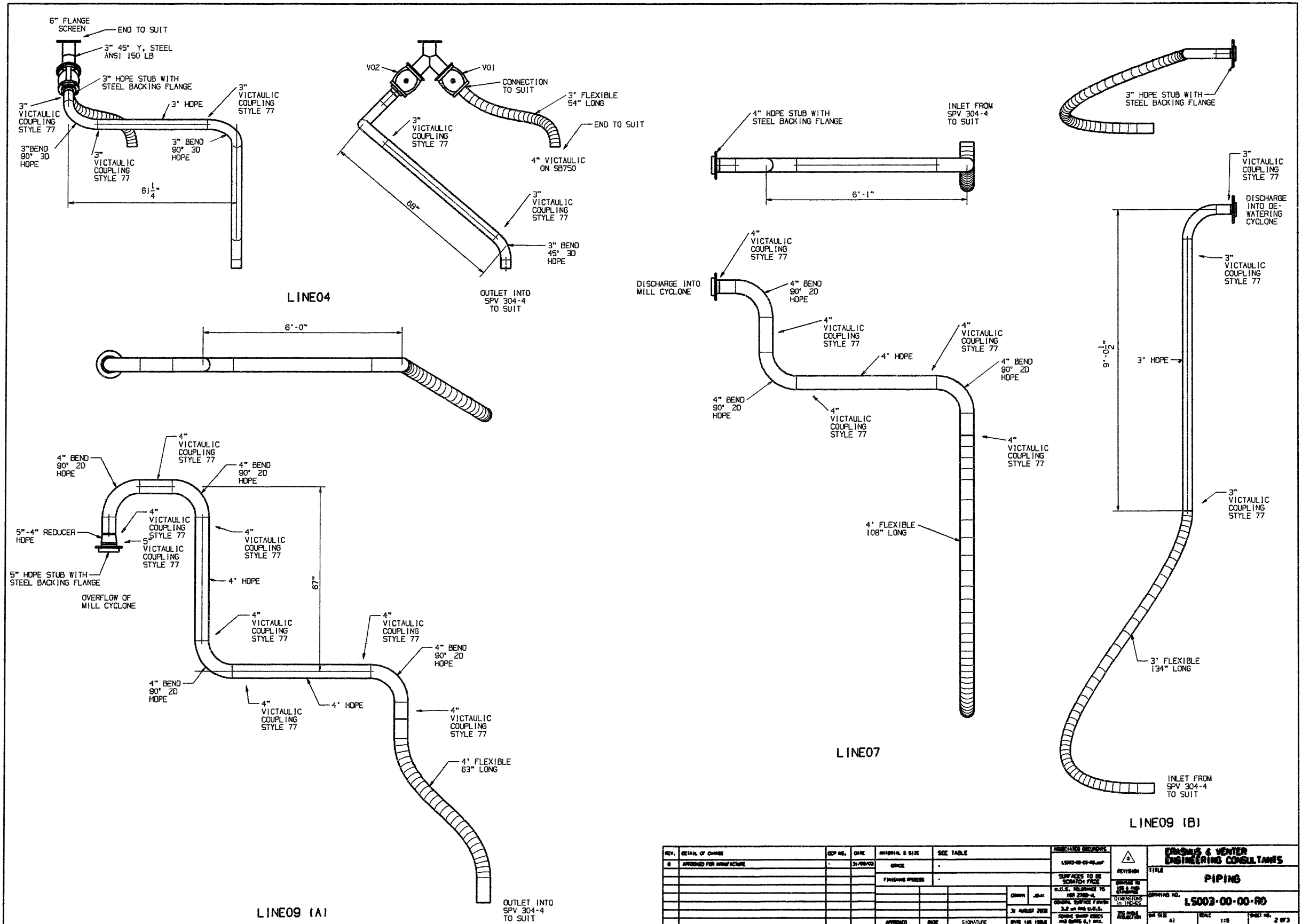


- NOTES:
1. LINE NUMBERS ACCORDING TO LATEST P&ID
 2. LINES SHOWN INDIVIDUALLY ON SHEET 2
 3. LINES SHOWN BOLD
 4. THE FLEXIBLE LINE FROM V06 TO LINE08 IS SHOWN AS LINE14. FEED FROM V05 TO THE VIBRATING SCREEN TO SUIT
 5. LINE15 IS CONSIDERED TO BE AFTER V07
 6. LINE17, AS WELL AS THE LINE TO THE FALCON C400 BY OTHERS
 7. THE LINE FROM THE Ø 60 OUTLET ON THE SIEVE BEND TO SUIT
 8. SPECIFIC DETAIL REGARDING PIPE SUPPORTS NOT SHOWN

18	1	PNEUMATIC LINE	SEE SHEET 2
17	1	LINE17	BY OTHERS
16	1	LINE16	SEE SHEET 2
15	1	LINE15	BY OTHERS
14	1	LINE14	SEE SHEET 2
13	1	LINE13	SEE SHEET 2
12	2	LINE12	SEE SHEET 2
11	1	LINE11	SEE SHEET 2
10	1	LINE10	SEE SHEET 2
9	1	LINE09	SEE SHEET 2
8	1	LINE08	NOT REQUIRED
7	1	LINE07	SEE SHEET 2
6	1	LINE06	SEE SHEET 2
5	1	LINE05	SEE SHEET 2
4	1	LINE04	SEE SHEET 2
3	1	LINE03	BY OTHERS
2	1	LINE02	BY OTHERS
1	1	LINE01	BY OTHERS

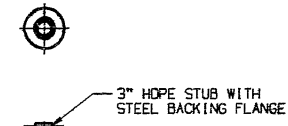
REV.	DETAILS OF CHANGE	APP. NO.	DATE	APPROVAL & SIZE	SEE TABLE	APPROVAL	DATE	SIGNATURE	DATE THE WORK WAS DONE
0	APPROVED FOR MANUFACTURE		21/08/08	GRICE					

SURFACES TO BE SCRATCH FREE FINISHES FINISHES W.A.S. TOLERANCE TO 100 2000-4 GENERAL SURFACE FINISH 3.2 UNLESS STATED REMOVE SHARP EDGES AND CORNERS TO R2		REVISIONS L5003-00-00-R0 DRAWING NO. L5003-00-00-R0 SHEET NO. 1 OF 3
---------------------------------------------------------------------------------------------------------------------------------------------------------------------------	--	-------------------------------------------------------------------------------

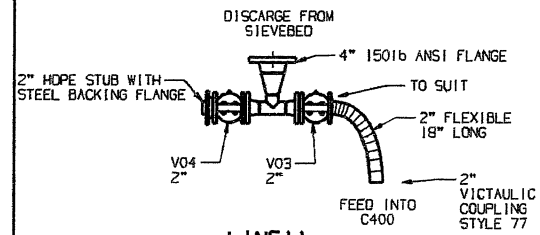
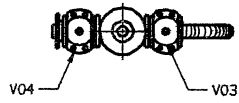


REV.	DETAIL OF CHANGE	APP. NO.	DATE	MATERIAL & SIZE	SEE TABLE	APPROVED	DATE	REVISION	DATE
0	APPROVED FOR MANUFACTURE		3/18/03	SPICE					

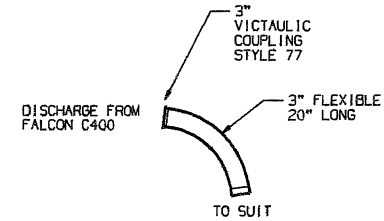
CRANDALL & WENTER ENGINEERING CONSULTANTS	
PIPING	
LS003-00-00-R0	
SHEET NO. 2 OF 3	SCALE 1:5



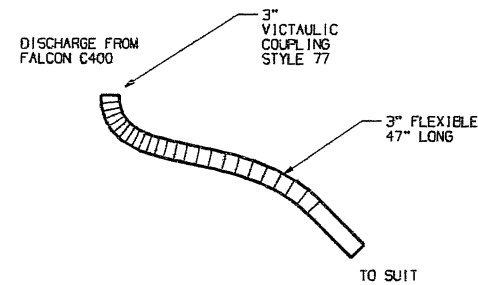
LINE10



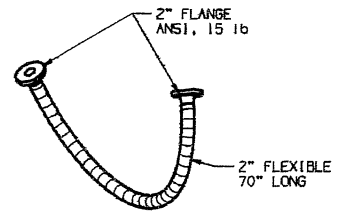
LINE11



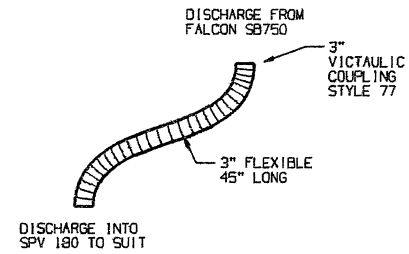
LINE12



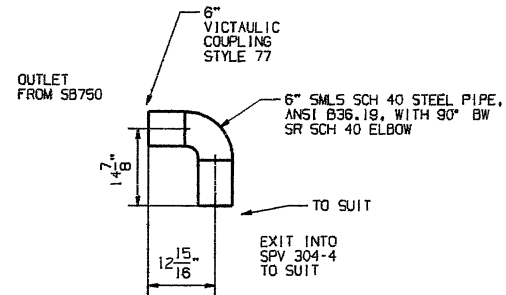
LINE13
2 OFF



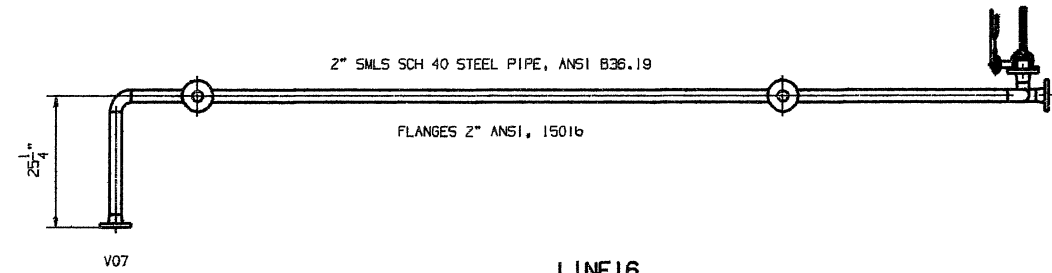
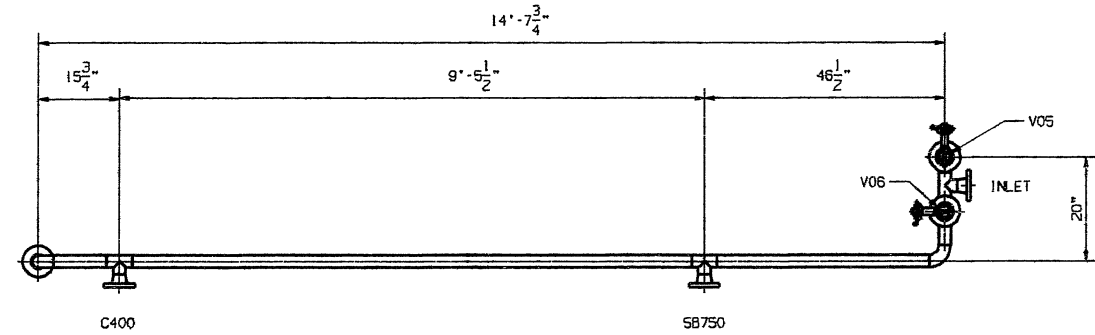
LINE14



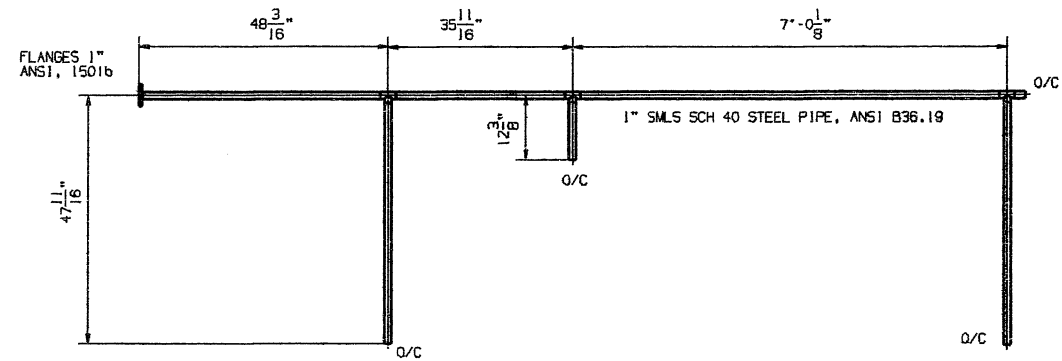
LINE05



LINE06



LINE16



PNEUMATIC LINE

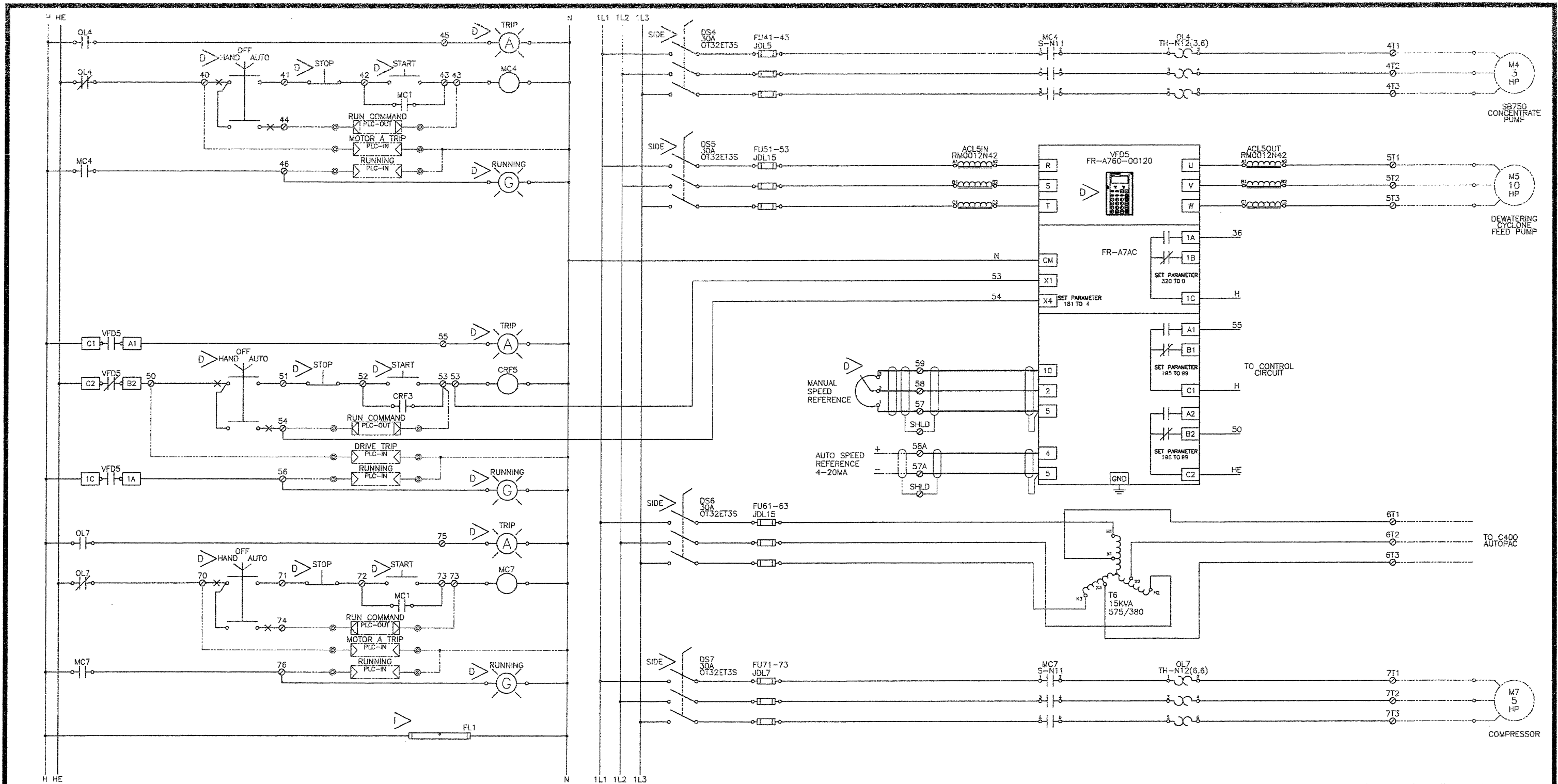
REV.	DETAILS OF CHANGE	APP. NO.	DATE	APPROVAL & SIGNATURE	SEE TABLE	ASSOCIATED DOCUMENTS	REVISION	TITLE
0	APPROVED FOR MANUFACTURE		21/08/03			LS003-00-00-00		PIPING
								LS003-00-00-00

GRANUS & WENTER
ENGINEERING CONSULTANTS

PIPING

PROJECT NO. **LS003-00-00-00**

SHEET NO. **3** OF **3**



MRS	DRIVE CONNECTION TERMINAL	—	ARROW SUPPLIED ENCLOSURE WIRING
888	DEVICE CONNECTION TERMINAL	---	CUSTOMER SUPPLIED ENCLOSURE WIRING
888	TERMINAL NOT FOR CUSTOMER CONNECTION	---	ARROW SUPPLIED FIELD WIRING
888	TERMINAL FOR CUSTOMER CONNECTION	---	CUSTOMER SUPPLIED FIELD WIRING
D	LOCATED ON ENCLOSURE DOOR	○	SUPPLIED PLC OUTPUT
I	LOCATED INSIDE ENCLOSURE	○	SUPPLIED PLC INPUT
R	LOCATED REMOTE FROM ENCLOSURE	○	CUSTOMER PLC OUTPUT
C	LOCATED IN RESISTOR CAGE	○	CUSTOMER PLC INPUT

ENCLOSURE	TYPE	COOLING	BUSS BAR RATING	HEIGHT	WIDTH	DEPTH	CUSTOMER NAME	CUSTOMER DRAWING NUMBER
	NEMA 3R	FAN COOLED	NONE	60(72)	60	24	FALCON CONCENTRATORS LANGLEY, BRITISH COLUMBIA	
PART NUMBER								#111 8410 ONTARIO ST. VANCOUVER, B.C. V5X 3E7
							ARROW SPEED CONTROLS LIMITED	#6 - 5080 TIMBERLEA BLVD. MISSISSAUGA, ON L4W 4M2
							PLANT	
							TITLE	MOTOR CONTROL PANEL
							SUBTITLE	WIRING DIAGRAM
0	28-JUL-08	ORIGINAL DRAWING	SCALE		NONE	DRAWN	LHK	B00728002
REV.	DATE	DESCRIPTION	DATE	28-JUL-08	CHECKED			